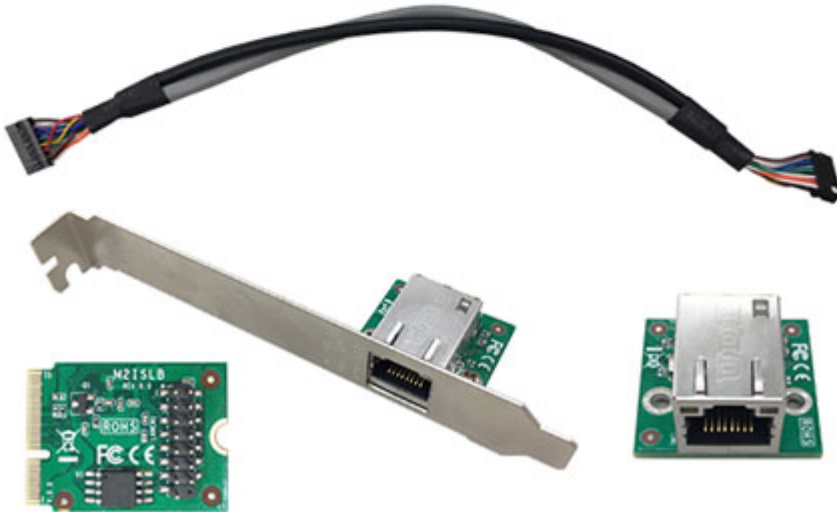
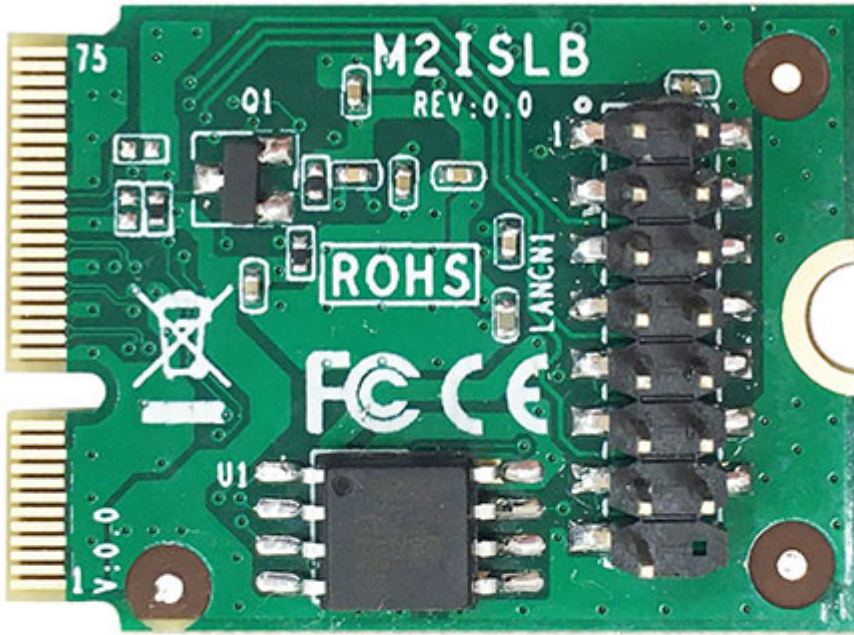


69.95 EUR
incl. 19% VAT, plus [shipping](#)



- M.2 E-key 2230 Daughter Card, support 1* 2.5GbE expansion
- M.2 E-key 2230 interface
- Chipset: Intel i225LM 2.5GbE LAN controller
- Compliant with the 2.5Gb/s IEEE802.3 specifications
- Support Full duplex operation at 10/100/1000/2500 Mb/s, Support Half duplex at 10/100 Mb/s
- Wake on LAN function (Depend on M/B 3.3V Standby Power)
- Support 1 * 2.5GbE
- Accessories 1: 25cm 16P to 16P cable * 1 pcs
- Accessories 2: 2.5GbE Bracket (J2ADSLANCNCR10-25G) * 1 set
- Size: 22.00 x 30.00 mm

Size	- 22.00 x 30.00mm
Chipset	- Intel i225LM 2.5GbE LAN controller

Features	<ul style="list-style-type: none">- Compliant with the 2.5Gb/s IEEE802.3 specifications- Support Full duplex operation at 10/100/1000/2500 Mb/s- Support Half duplex at 10/100 Mb/s- Wake on LAN function (Depend on M/B 3.3V Standby Power)- Support 1 * 2.5GbE
Interface	<ul style="list-style-type: none">- M.2 E-key 2230
Accessories	<ul style="list-style-type: none">- 25cm 16P to 16P cable * 1 pcs- 2.5GbE Bracket (J2ADSLANCNCR10-25G) * 1 set